

## MultiTEK™ Slim Controller

The latest COMPLETE CNC SERVO control system in a single simple plug-together slim package.

### MultiTEK™ Slim

Experience the difference servomotors can make,

- **Fast, smooth motion**
- **High Accuracy**  
**No more missed steps or lost positions**
- **Whisper quiet motion**

"A perfect upgrade for any stepper motor driven CNC machine."

Upgrading your stepper system to servo or just wanting the very best performance, this controller is designed and made for you. Unlike stepper motors, servomotors cannot lose position and give you a faster, quieter and more accurate machine.

From small workshop machines to desktop machines, the MultiTEK™ Slim utilizes the latest technology servo drives, the TEK™ 6 to deliver optimum performance and ease of operation.

---

### DEAL 1. MultiTEK Slim Controller AUD\$850 (+GST & Freight)

Includes all drives, power filter, fuse, heat sink and breakout board in one easy to install MultiTEK™ Slim controller.



## DEAL 2. Brushless Upgrade Kit AUD\$1300 (+GST & Freight)

The MultiTEK Slim is also available as a CNC Brushless upgrade kit; this kit includes MultiTEK Slim Controller, 3 x 50W Nema 23 Brushless Servomotors with selectable resolution encoders and parallel port cable.



---

## DEAL 3. Plug in Solution AU\$1895 (+GST, Freight & Cables\*)

Are you looking for a CNC Controller where no electrical wiring is required? Power Supply, pre-made motor cables are all included. This is the full plug-in solution, just plug in Motors, Power supply and computer and you are ready to go. \*



\*Includes 1 metre long pre-made standard motor cables for extra length add AUD\$10 per metre for Standard cables, \$25 per metre for High Flex cables (recommended where the cable will be continually bending during machine operation). Computer and Mach 3 software is not included in the price.

---

## ACCESSORIES

CNC Teknix also provides a range of accessories to enhance your CNC experience such as the USB CNC Interface to achieve faster speeds or the USB + Pendant Interface and Pendant for that real CNC machine feel.



**USB + Pendant Interface**

**Pendant**

**TOTAL PRICE: USB + Pendant \$815 + GST**

USB + Pendant Interface with connection for Hand control Pendant. For use exclusively with Mach3, this unit connects between the USB port of your computer, the DB25 input to your CNC controller and includes a hand Pendant for the remote control of your CNC machine.



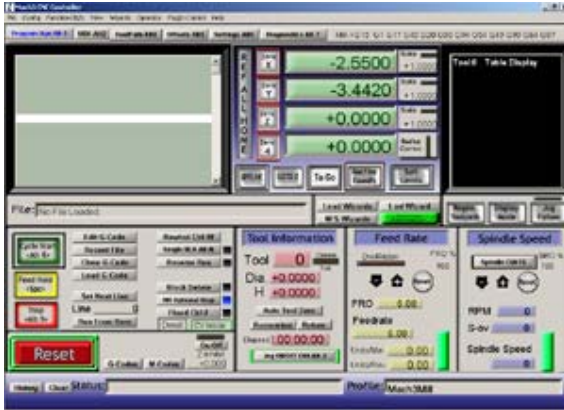
**USB CNC Interface \$320+ GST**

This interface is designed specifically for Mach3 CNC control. With parallel ports becoming harder to find, and the old step/direction speeds running a little to slow for modern High resolution Servomotors, this unit plugs into a spare USB port and gives you the equivalent of 2\* LPT ports dedicated to your CNC and with speeds of up to 4Million Steps/second!

### Features:

- Up to 4Million Steps/sec
- Up to 6 axes simultaneous control
- Includes 2 LPT ports
- All pins on both ports configurable within Mach3
- NO power supply required.
- Will work as an interface to almost any older LPT CNC Controller.
- Powered by the USB, no extra power supplies are required. USB cable and software drivers are supplied.

# MACH3 OPERATING SOFTWARE



## Mach 3 PRICE \$250 + GST

If ultimate speed, accuracy and expandable I/O is what you need, Mach 3 can control your machine with speeds up to 1,000,000 sps and be configured for expandable I/O utilizing the CNC Teknix **USB CNC Interface**.

- \* Converts a standard PC to a fully featured CNC controller
- \* Up to 6 axis CNC control
- \* Allows direct import of DXF BMP JPG and HPGL
- \* Visual G-Code display
- \* Generates G-code

Easy to use Mach 3 CNC Control software has evolved to be one of the best available PC, CNC software packages on the market today.

## MultiTEK Slim

### Technical Specifications & Characteristics

Parameter	MultiTEK™ Slim
<b>Drive Specification</b>	
Drive Voltage (Maximum)	28V
Drive Voltage (Minimum)	12V
Drive Voltage Ripple	<2% See Note 1
Drive Current (Peak) [Software Limited]	30A
Drive Current (Continuous)	8A
Drive Current Trip Value	30A
Servo Motor Resistance (Minimum)	1 ohm
Servo Motor Inductance (Minimum)	1mH
PWM Switch Frequency	25Khz
<b>Logic Specification</b>	
5V Logic Supply	5V @ 85mA
24V Driver Supply	24V @ 8A
Logic Level	3.3V – 5V TTL
Encoder Quadrature TTL Channels	2
Encoder Current (Maximum)	200mA
Encoder Pulse Frequency (Maximum)	2 MHz
Encoder following error trip	+/- 10 to +/- 2000 selectable
Encoder Voltage	5V +/- 10% 0.25A Maximum current draw
<b>Physical Specification</b>	
Dimensions	3 Axis 350L x 100W x 20H 4 Axis 410L x 100W x 20H
Weight	1kg & 1.1kg
Motor / Power Terminals	Plug Header 10A
Hall Sensor	6 way Header 0.1"
Encoder Connector	RJ45
Operating Temperature Range	0 ~ 55 DegC RH 90% non condensing
Storage Temperature Range	-30 ~ 85 DegC RH 90% non condensing

### Features

- Power Output over 200W
- Dual high speed processors
- Full Serial PID adjustment during operation
- Fuzzy PID (F-PID) enhanced control.
- Delivers up to 8A continuous current
- Peak current over 30A
- Operates at supply voltages from 12-24VDC
- Speeds in excess of 1MHZ
- Tuning and Fault indicator LEDs
- Over Voltage/Temp/Current protection
- Minimal Heat Generation
- Analogue output of Following Error for tuning
- Encoder Fault detection

### Applications

- High Speed, High Precision motion control.
- CNC Printers, Plotters and Engravers, small CNC Routers